



# 2-WAY TOGGLE VALVES



## 2-WAY TOGGLE VALVES

2-way valves are the simplest pneumatic component—their function is

merely to turn an air supply on and off. They may best be compared to a water faucet; in the “on” position water

flows from inlet to outlet, and in the “off” position the water flow is stopped. 2-way toggle valves may have a poppet or spool, and may be either a 2 position or have a momentary actuation.

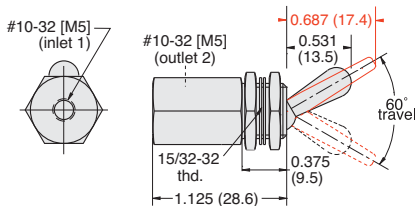
**Medium:** Air, Water or Oil

**Materials:** Brass body, Buna-N seals, stainless steel stem and spring

**Force For Full Stem Travel:** 12 oz. nominal

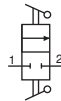
**Mounting:** 15/32-32 thread. Nuts and lockwashers furnished.

### 2 Position Spool Valves



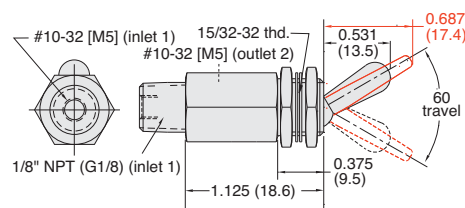
**Input Pressure:** 150 psig/10 bar max.

**Air Flow:** 4.5 scfm @ 50 psig; 8.0 scfm @ 100 psig;  
190 l/min @ 6 bar



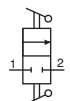
Part No.	Description
<a href="#">TV-2S</a>	2 Position Spool Valve, NP Steel Toggle, #10-32
<a href="#">TV-2S-M5</a>	2 Position Spool Valve, NP Steel Toggle, M5
<a href="#">TV-2SF</a>	2 Position Spool Valve, Plastic Toggle, #10-32
<a href="#">TV-2SF-M5</a>	2 Position Spool Valve, Plastic Toggle, M5

### 2 Pos. Spool Valves with 1/8" NPT Inlet



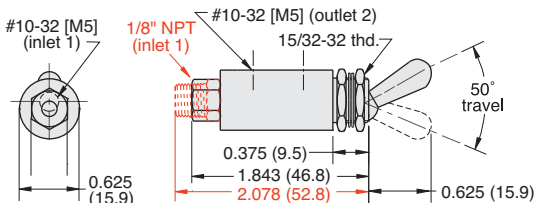
**Input Pressure:** 150 psig max.

**Air Flow:** 4.5 scfm @ 50 psig; 8.0 scfm @ 100 psig;



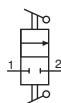
Part No.	Description
<a href="#">TV-2SP</a>	2 Position Spool Valve, NP Steel Toggle, 1/8" NPT
<a href="#">TV-2SFP</a>	2 Position Spool Valve, Plastic Toggle, 1/8" NPT

### 2 Position Poppet Valves



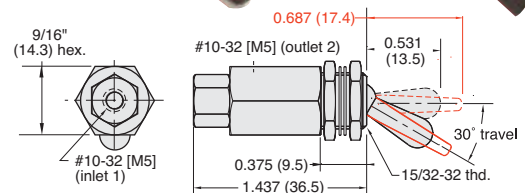
**Input Pressure:** 150 psig/10 bar max.

**Air Flow:** 4.0 scfm @ 50 psig; 7.3 scfm @ 100 psig;  
175 l/min @ 6 bar



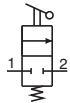
Part No.	Description
<a href="#">MTV-2</a>	2 Position Poppet Valve, NP Brass Toggle, #10-32
<a href="#">MTV-2-M5</a>	2 Position Poppet Valve, NP Brass Toggle, M5
<a href="#">MTV-2P</a>	2 Position Poppet Valve, NP Brass Toggle, 1/8" NPT

### 2 Pos. N.C. Poppet with Momentary Actuation



**Input Pressure:** 150 psig/10 bar max.

**Air Flow:** 4.5 scfm @ 50 psig; 8.0 scfm @ 100 psig;  
175 l/min @ 6 bar



Part No.	Description
<a href="#">TV-2M</a>	2 Position N.C. Poppet Valve, NP Steel Toggle, #10-32
<a href="#">TV-2M-M5</a>	2 Position N.C. Poppet Valve, NP Steel Toggle, M5
<a href="#">TV-2MF</a>	2 Position N.C. Poppet Valve, Plastic Toggle, #10-32
<a href="#">TV-2MF-M5</a>	2 Position N.C. Poppet Valve, Plastic Toggle, M5